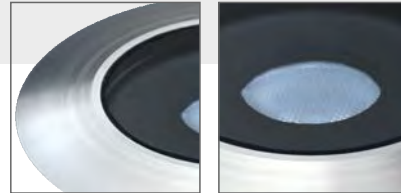
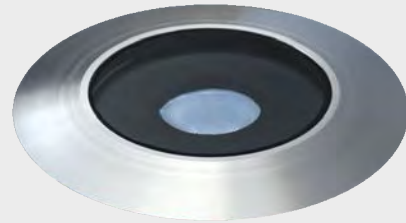


AXIS M

In Ground - Drive Over



AXIS is our smallest 1 LED inground which fulfills two important requirements: Small dimensions and powerful light effect.

With a small diameter of 50mm, dimension, Axis recessed inground allows to create powerful and pure light effect. It can be used as a single point of light, thanks to its dimensions. Suitable for installation on floor for outdoor areas, in the drive-over use. Installation in concrete with a recessed box.

Luminaire comes with 2 sides cable as standard.

Key Advantages

- Drive over
- High thermal performance
- High corrosion resistance
- High IP protection
- Excellent light output
- High Ambient temperature
- Easy installation

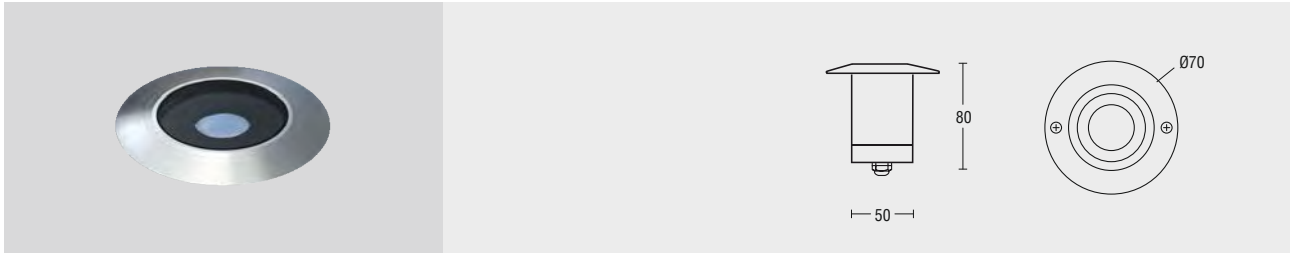
Characteristics

Aluminium Injection Die Cast Body
Electrostatic Powder Paint
Optional RAL Colors
Extra Clear 5mm Tempered Glass
Aluminium PCB
LED with Life Span > 100.000 Hours
CCT tolerance within a 3 step MacAdams ellipse
Corrosion Protection
5 Years Warranty
Marine Coating (Optional)
ENEC Certified Driver

Applications



AXIS M



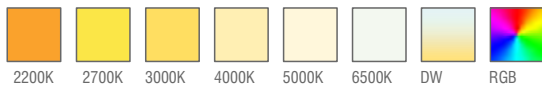
Standard Product

Input	100-240V / AC 50-60Hz
Control	On / Off
Optic	30°
Light Color	4000K
Body Color	7016 Grey
Frame	Stainless Steel
CRI	> 82
Protection	IP67
Impact Resistance	IK10
Protection class IEC	Class I
Power factor (min.)	0,092
Weight	- kg
Ambient Temperature	-30°C / +60°C

Available Options

Input	24V / DC
Control	RGB, DALI, DIM, DMX
Optic	8°, 15°, 30°, 50°, 60°, 70°, 90°, 120°, Asymmetrical
Light Color	2200K, 2700K, 3000K, 5000K, 6500K
Body Color	Optional RAL colors
Glass	Frosted Diffuser Glass
CRI	> 90
Protection	IP68
Warranty	7-10 Years

Light Colors

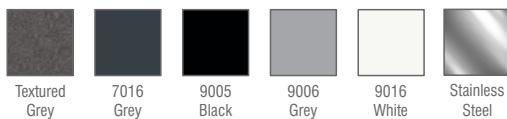


Ordering Details

Product Code	Power	Light Color	Beam Angle	Lumen
AXISM.3.AC.N.4.30.7016	3W	4000K	30°	390
AXISM.4.AC.N.4.30.7016	4W	4000K	30°	520

* For different options, please contact our team.

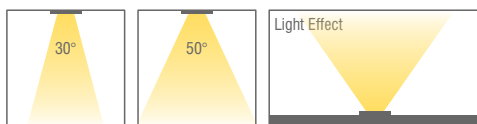
Body Colors Options



Recessed Box



Beam Angle Options



Optional Accessories



Anti-Glare
Honeycomb
Accessory



IP67
Junction
Box

Product Coding

Product Name	Product Power	Input	Control System	Color Temperature	Light Beam	Body Color
XX	XX	AC DC	ON/OFF 0-10V PUSH TRAC DALI	3K 4K 6.5K	XX	XX
XX	XX	AC DC	N V P T D	3 4 6	XX	XX