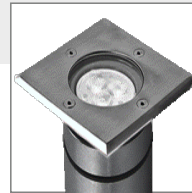


AXIS M SQ

In Ground - Walk Over



AXIS M SQ is our smallest 1 LED inground which still fulfills two important requirements: Small dimensions and powerful light effect.

With a small diameter of 50mm, dimension, Axis recessed inground allows to create powerful and pure light effect. It can be used as a single point of light, thanks to its dimensions. Suitable for installation on floor for outdoor areas, in the drive-over use. Installation in concrete with a recessed box.

Key Advantages

- Drive over
- High thermal performance
- High corrosion resistance
- High IP protection
- Excellent light output
- High Ambient temperature
- Easy installation

Characteristics

Aluminium Body

Electrostatic Powder Paint

Adjustable Bracket

High Power LED with Life Span 60.000 Hours

ENEC Certified Driver

3 Step MacAdams

Applications



Landscape



Outdoor

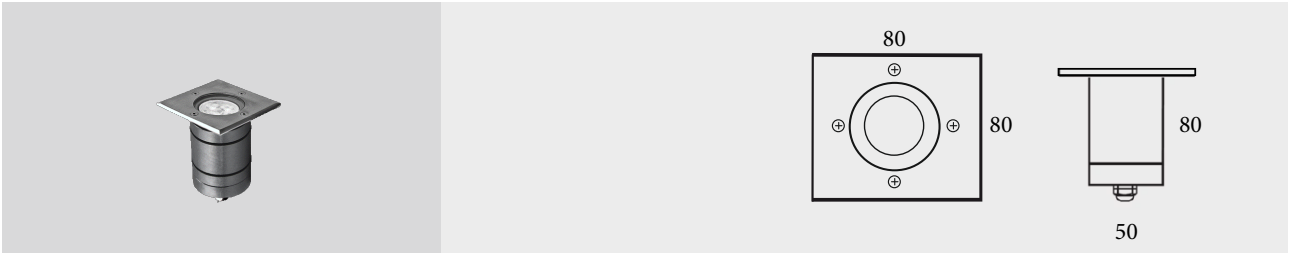


Urban



Architectural

AXIS M SQ



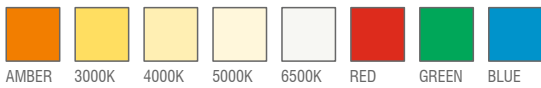
Standard Product

Input	210-260V / AC 50-65Hz
Control	DALI
Optic	16°
Light Color	3000K
Body Color	to match floor finish
Frame	Stainless Steel
CRI	>80
Protection	IP67
Impact Resistance	IK09
Static Load Resistance	1000 kg
Working Temperature	-30°C / +60°C

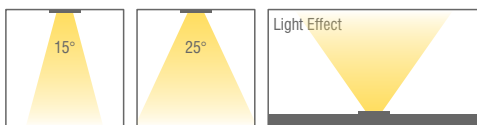
Available Options

Input	24V / DC
Control	DALI, DIM, DMX
Optic	25°
Light Color	4000K, 5000K, 6500K
Body Color	Optional RAL colors
CRI	>90

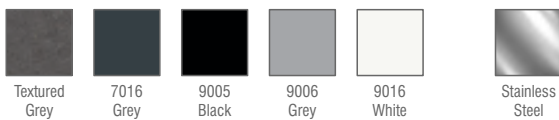
Light Colors



Beam Angle Options



Body Colors & Frame Options

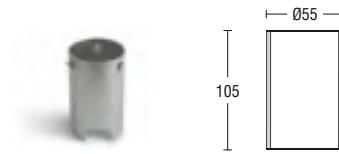


Ordering Details

Product Code	Power	Light Color	Beam Angle	Lumen
AXISMSQ.3.AC.N.3.30.7016	3W	4000K	30°	360
AXISMSQ.7.AC.N.3.30.7016	7W	4000K	30°	740
AXISMSQ.9.AC.N.3.30.7016	9W	4000K	30°	920

* For different options, please contact our team.

Recessed Box



Optional Accessories



Anti-Glare
Honeycomb
Accessory



IP67
Junction
Box

Product Coding

Product Name		Product Power		Input		Control System				Color Temperature			Light Beam		Body Color
XX	XX	XX	XX	AC	DC	OFF	1-3DV	PUSH	TRAC	DAU	3K	4K	6.5K	XX	XX
XX	XX	AC	DC	N	V	P	T	D	3	4	6	XX	XX		