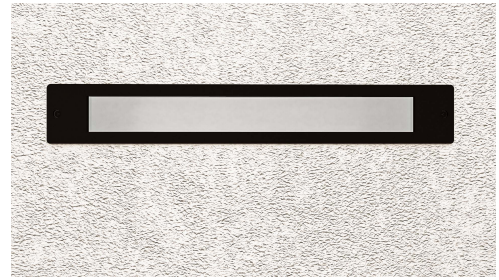


MINI PLUM SLIM

Wall Luminaire Surface/Wall Mounted



A simple and structural accent for modern exteriors. MINI PLUM SLIM Outdoor LED recessed Wall light provides soft atmospheric lighting to accentuate outdoor spaces and offer guidance along pathways.

Made of aluminum, this rectangular erutxfi extends straight upward to allow its light to spill outward.

This luminaire is an iconic design in a modern reinterpretation to LED sources with outstanding performance, designed to guarantee an high visual comfort, glare-free lighting with no light pollution.

Characteristics

Aluminium Injection Body

Electrostatic Powder Paint

Optional RAL Colors

Aluminium PCB

LED with Life Span > 100.000 Hours

CCT tolerance within a 3 step MacAdams ellipse

Corrosion Protection

5 Years Warranty

Marine Coating (Optional)

Key Advantages

- Simple and structural for modern designs
- Economic and efficient
- Easy installation
- High performance LED
- High corrosion resistance

Applications



Exterior



Facade

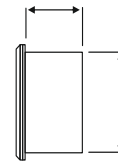
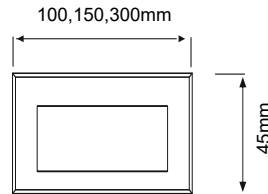


Architectural



Ancient

MINI PLUM SLIM



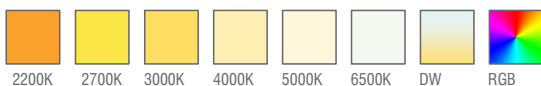
Standard Product

Input	220-240V / AC 50-60Hz
Control	On / Off
Optic	30°
Light Color	3000K
Body Color	9006 Grey
CRI	>82
Protection	IP67
Impact Resistance	IK09
Protection class IEC	Class I
Power factor (min.)	0,90
Weight	1,97 kg
Ambient Temperature	-30°C / +60°C

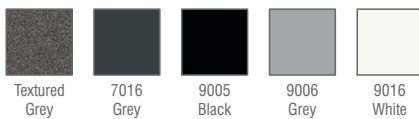
Available Options

Input	24V / DC
Control	DALI, DIM, DMX
Optic	30°, 60°, 90°
Light Color	2200K, 2700K, 3000K, 5000K, 6500K
Body Color	Optional RAL colors
CRI	>90
Protection	IP66 - IP67
Warranty	7-10 Years

Light Colors



Body Colors Options



Light Effect



Ordering Details

Product Code	Power	Dimensions	Light Color	Lumen
PLUM.S.3.AC.N.3.30.9006	3W	100	3000K	300
PLUM.S.5.AC.N.3.30.9006	5W	100	3000K	500
PLUM.S.3.AC.N.3.30.9006	3W	150	3000K	300
PLUM.S.5.AC.N.3.30.9006	5W	150	3000K	500
PLUM.S.7.AC.N.3.30.9006	7W	150	3000K	700
PLUM.S.10.AC.N.3.30.9006	10W	300	3000K	1000
PLUM.S.12.AC.N.3.30.9006	12W	300	3000K	1200
PLUM.S.15.AC.N.3.30.9006	15W	300	3000K	1500
PLUM.S.15.AC.N.3.30.9006	15W	300	3000K	2000

* For different options, please contact our team.

Product Coding

Product Name	Product Power	Input	Control System	Color Temperature	Light Beam	Body Color
XX	XX	AC DC	on/off 1-10V PUSH TRAC DALI	3K 4K 6.5K	XX	XX
XX	XX	AC DC	N V P T D	3 4 6	XX	XX