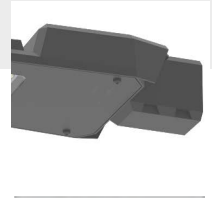
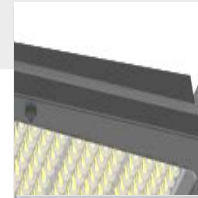
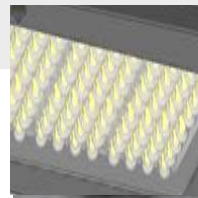


ROUTE M

LED Road Lighting
High Performance Street Light



The elegant lighting of the Streetlight through the use of luminaires. With a variety of control options and mounting configurations, they can be used for different applications.

Route Streetlight series of luminaires is an ideal choice for efficient and attractive lighting of paths and ways. It features a variety of housing sizes color temperatures, Light distribution and different dimming levels.

Characteristics

Aluminium Injection Body

Electrostatic Powder Paint

Optional RAL Colors

Heat & Impact Resistant Extra Clear 5mm Tempered Glass

Aluminium PCB

LED with Life Span >100.000 Hours

CCT tolerance within a 3 step MacAdams ellipse

Corrosion Protection (Optional)

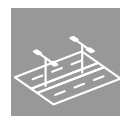
5 Years Warranty

Marine Coating (Optional)

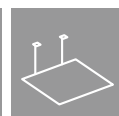
Key Advantages

- High operational temperature
- Can be easily integrated to many designs
- Economic and efficient
- Easy installation
- High performance LED
- High corrosion resistance
- Installation of Zhaga & Nema control sockets.
- M1, M2, M3 and M4 standards

Applications



Street

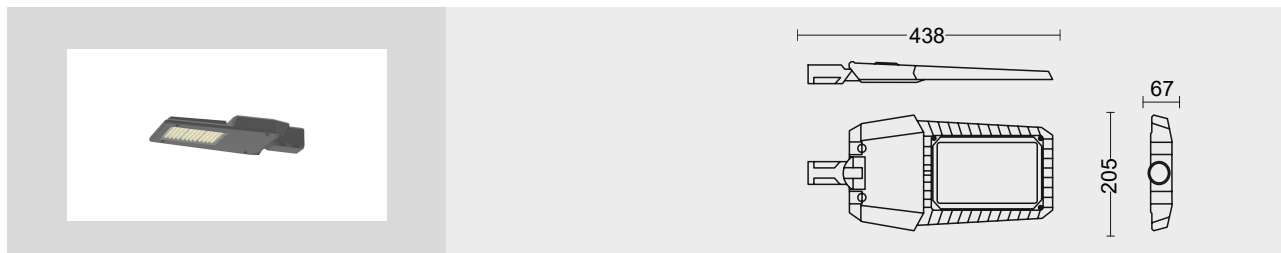


Parking



Highway

ROUTE M



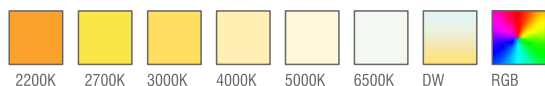
Standard Product

Input	100-305V / AC 50-60Hz
Control	On / Off
Optic	Asymmetrical Street Optics
Light Color	4000K
Body Color	9006 Grey
CRI	>82
Protection	IP66
Impact Resistance	IK10
Protection class IEC	Class I
Power factor (min.)	0,092
Surge protection	6KV
Wind Catching Area	0,26m ²
Weight	3,5kg
Ambient Temperature	-25°C / +60°C

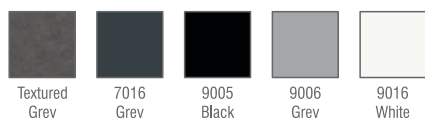
Available Options

Input	24V / DC
Control	DALI, DIM, DMX, NEMA7, ZHAGA
Optic	30°, 60°, 90°, 120°
Light Color	2200, 2700, 3000K, 5000K, 6500K
Body Color	Optional RAL colors
CRI	>90
Surge protection	10KV
Warranty	7-10 Years

Light Colors



Body Colors Options

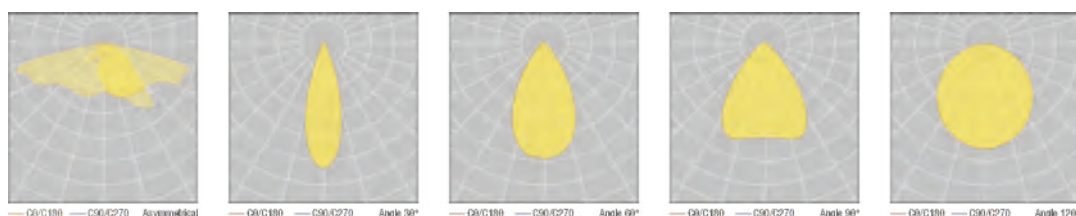


Optional Accessories



Photocell Sensor

Beam Angle Options



Ordering Details

PRODUCT CODE	POWER	LIGHT COLOUR	LUMEN
ROUTE M.60.AC.N.6.ASY.9006	60W	4000K	10900
ROUTE M.70.AC.N.6.ASY.9006	70W	4000K	11700
ROUTE M.75.AC.N.6.ASY.9006	75W	4000K	12500
ROUTE M.80.AC.N.6.ASY.9006	80W	4000K	13000
ROUTE M.85.AC.N.6.ASY.9006	85W	4000K	14100
ROUTE M.90.AC.N.6.ASY.9006	90W	4000K	14600
ROUTE M.95.AC.N.6.ASY.9006	95W	4000K	15450
ROUTE M.100.AC.N.6.ASY.9006	100W	4000K	16100
ROUTE M.125.AC.N.6.ASY.9006	125W	4000K	17550

* For different options, please contact our team.

Product Coding

Product Name	Product Power	Input	Control System	Color Temperature	Light Beam	Body Color
XX	XX	AC DC	on/off 1-10V PUSH TRAC DALI	3K 4K 6.5K	XX	XX
XX	XX	AC DC	N V P T D	3 4 6	XX	XX