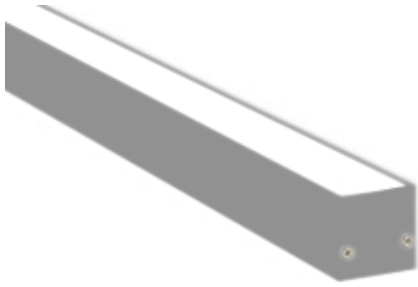




# SATIN LINE SQ

LEDBAR

Surface mounted



SATIN LINE is a linear LED fixture for facades and creative installations. Continuous interconnection with IP67 connectors Mounting bracket made of Stainless steel.

Aluminium extruded body and polyurethane based epoxy covering the electronics inside the luminaire so that the luminaire meets IP67 enclosure ratings Satin Line pixel can be fully customized in terms of leghts to match every installations types and measurements.





## LK] SMY Z^SY X ]

Light source color	3000K-4000K-6500K
Control interface	On/Off
Protection class IEC	Class 1
CE Mark	Yes
ENEC Standards	Yes
Warranty Period	5 years
Input Voltage	24V/ DC
LM80	>54 000 Hours
MacAdams	3 step MacAdams
Wind Catching Area	0.13 m <sup>2</sup>
Power Factor (Min)	0.95
Ambient temperature	-25°C to +60°C

## Y Z^SM ]

Light source	Power LED on Alum PCB
Color Rendering Index	CRI>80

## CUSTOMIZED OPTIONS

LED Color	RED-GREEN-BLUE-AMBER
Connectors	IP 68 Conectors
Light source	Mid Power LED on Alum PCB
Diffuser	Opaque Diffuser
Control System	Dynamic White- RGB- RGBW

## ELECTRICAL OPTIONS

Input Voltage	24V/ DC
Input Frequency	DC

## LY Nc^Y Z^SY X ]

Housing	Extruded Extrusion
Gasket	Silicone
Protection rating	IP 67
Impact resistance	IK10
Diffusor	Clear transparent
Screws	316 stainless steel
End Caps	Aluminium Extrusion
Weight	316 stainless steel



## CONNECTION

Connection Cable	Silicon Cable 30cm- 3x1.5 mm <sup>2</sup>
------------------	---

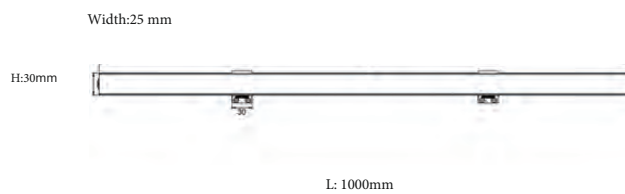
## ORDERING DETAILS

PRODUCT CODE	W	Length	Temp	Lumen*
SATINLINESQ.7.1000.4	7W	1000mm	4000K	910Lm
SATINLINESQ.12.1000.4	12W	1000mm	4000K	1560Lm
SATINLINESQ.14.1000.4	14W	1000mm	4000K	1820Lm
SATINLINESQ.18.1000.4	18W	1000mm	4000K	2340Lm
SATINLINESQ.21.1000.4	21W/m	1000mm	4000K	2960Lm/m

## PRODUCT CODING

Product Name	Product Power	Product Size	Control System					Color Temperature			Light Beam
XX	XX	XX	on/off	1-10V	PUSH	TRIM	DAU	4K	3K	6.5K	△
XX	XX	XX	N	V	P	T	D	3	4	6	XX

## Technical Drawing



## Connection Diagram

