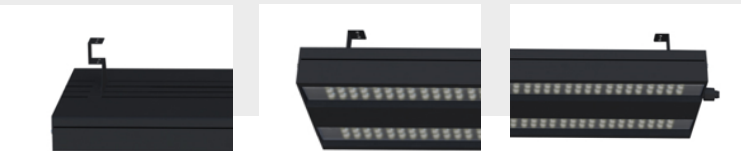
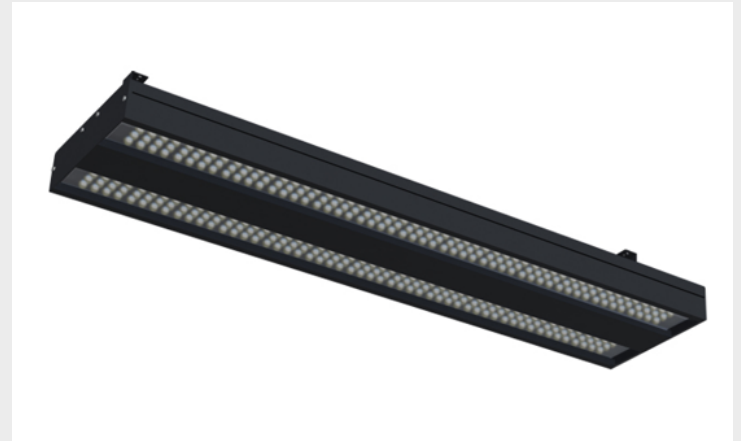


# Venti Duo

High Performance Industrial Lighting



**Venti Duo Linear serie is intended for new hazardous area installations as well as retrofitting existing fluorescent systems that require high-performance. Venti Duo is a harmonic combination of strong and attractive and attractive form.**

Housing of UV stabilized, made of Aluminium Extrusion body. Two clamps for surface mounting of the luminaire. Natural silicone gel gasket. VENTI DUO can be installed in environments with high temperature. If the light are fittings installed in exterior, the degree of IP protection is IP66.

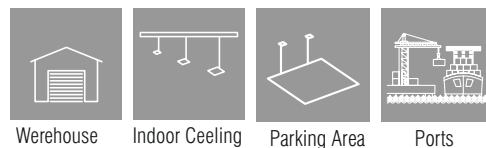
## Characteristics

Aluminium Extrusion body
Aluminium End caps
Tempered Glass
Constant Current output LED driver
With high efficiency aluminium PCB
UV Protected PMMA Diffuser & Body
LED with Life Span > 100.000 Hours
CCT tolerance within a 3 step MacAdams ellipse
Corrosion Protection for diffuser & body (Optional)
5 Years Warranty
Marine Coating (Optional)

## Key Advantages

- High Efficiency
- Safe Instalation and application
- Cost-Efficient
- Various installation type
- Easy installation
- High performance LED
- High corrosion resistance

## Applications



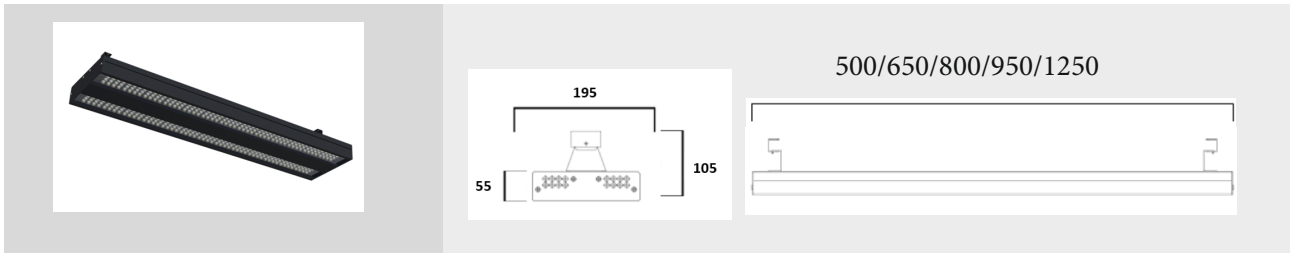
Warehouse

Indoor Ceiling

Parking Area

Ports

# Venti Duo



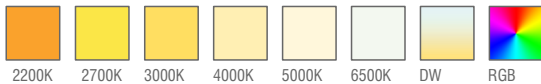
## Standard Product

Input	210-260V / AC 50-65Hz
Control	On / Off
Optic	120°
Light Color	4000K
Body Color	9005 Black
CRI	>82
Protection	IP66
Impact Resistance	IK08
Protection class IEC	Class I
Power factor (min.)	0,092
Wind Catching Area	0,26m²
Weight	4,2 kg
Ambient Temperature	-20°C / +50°C

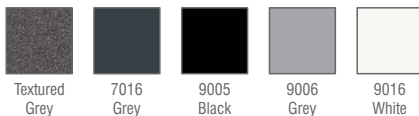
## Available Options

Input	24V / DC
Control	DALI, DIM, DMX
Light Color	2200, 2700, 3000K, 5000K, 6500K
Body Color	Optional RAL colors
Surge protection (common/differential)	4KV/6KV
CRI	>90
Warranty	7-10 Years
Protection	IP67-IP68

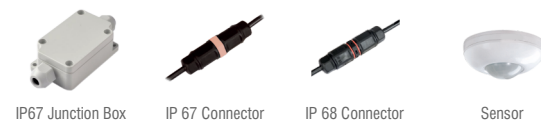
## Light Colors



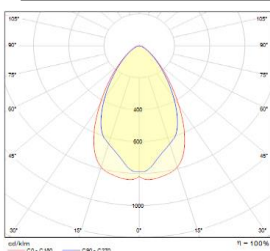
## Body Colors Options



## Optional Accessories



## Beam Angle Options



## Ordering Details

Product Code	Power	Light Color	Dimensions	Lumen
VentiDuo.50.500.AC.N.4.120.9005	50W	4000K	500	6750
VentiDuo.75.500.AC.N.4.120.9005	75W	4000K	500	10125
VentiDuo.75.650.AC.N.4.120.9005	75W	4000K	650	10125
VentiDuo.100.650.AC.N.4.120.9005	100W	4000K	650	13500
VentiDuo.100.800.AC.N.4.120.9005	100W	4000K	800	13500
VentiDuo.125.800.AC.N.4.120.9005	125W	4000K	800	16875
VentiDuo.125.950.AC.N.4.120.9005	125W	4000K	950	16875
VentiDuo.150.950.AC.N.4.120.9005	150W	4000K	950	20250
VentiDuo.150.1250.AC.N.4.120.9005	150W	4000K	1250	20250
VentiDuo.175.1250.AC.N.4.120.9005	175W	4000K	1250	23625
VentiDuo.200.1250.AC.N.4.120.9005	200W	4000K	1250	27000
VentiDuo.220.1250.AC.N.4.120.9005	220W	4000K	1250	38500

\* For different options, please contact our team.

## Product Coding

Product Name	Product Power	Input	Control System	Color Temperature	Light Beam	Body Color
XX	XX	AC DC	5V/6V 1-10V PUSH TRAC DALI	3K 4K 6.5K	XX	XX
XX	XX	AC DC	N V P T D	3 4 6	XX	XX