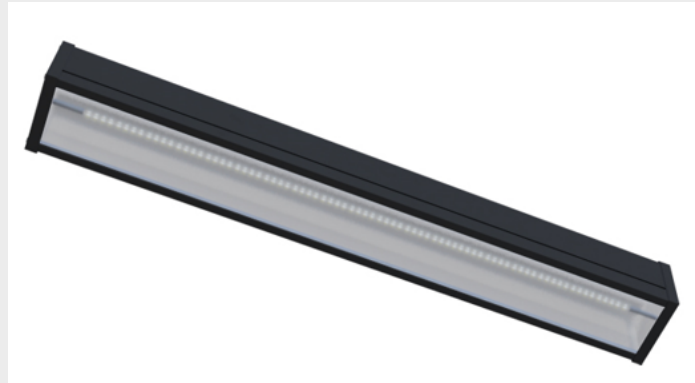


Venti Ref

High Performance Industrial Lighting



Venti Ref Linear serie is intended for new hazardous area installations as well as retrofitting existing fluorescent systems that require high-performance. Venti Ref is a harmonic combination of strong and attractive and attractive form.

Housing of UV stabilized, made of Aluminium Extrusion body. Two clamps for surface mounting of the luminaire. Natural silicone gel gasket. Venti Single can be installed in enviroments with high temperature. If the light are fittings installed in exterior, the degree of IP protection is IP66.

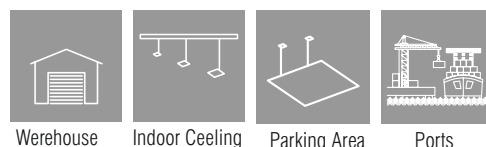
Characteristics

- Aluminium Extrusion body
- Aluminium End caps
- Tempered Glass
- Constant Current output LED driver
- With high efficiency aluminium PCB
- UV Protected PMMA Diffuser & Body
- LED with Life Span > 100.000 Hours
- CCT tolerance within a 3 step MacAdams ellipse
- Corrosion Protection for diffuser & body (Optional)
- 5 Years Warranty
- Marine Coating (Optional)

Key Advantages

- High Efficiency
- Safe Instalation and application
- Cost-Efficient
- Various installation type
- Easy installation
- High performance LED
- High corrosion resistance

Applications



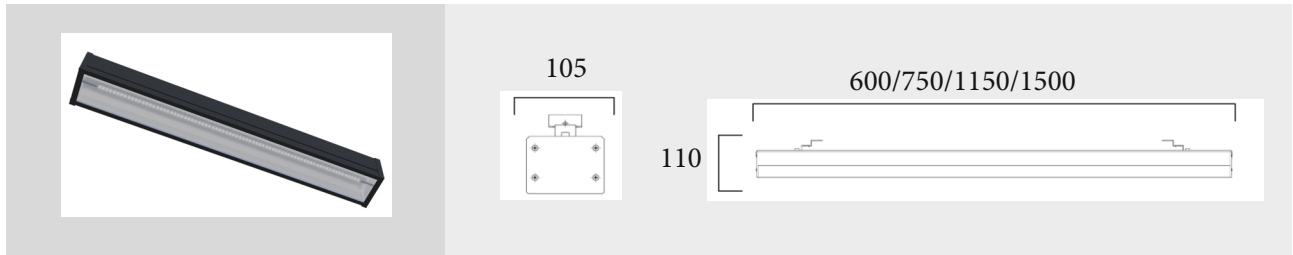
Warehouse

Indoor Ceiling

Parking Area

Ports

Venti Ref



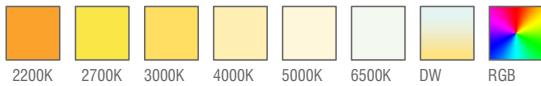
Standard Product

Input	210-260V / AC 50-65Hz
Control	On / Off
Optic	Asymmetric
Light Color	4000K
Body Color	9005 Black
CRI	>82
Protection	IP66
Impact Resistance	IK08
Protection class IEC	Class I
Power factor (min.)	0,092
Wind Catching Area	0,26m ²
Weight	4,2 kg
Ambient Temperature	-20°C / +45°C

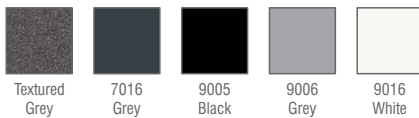
Available Options

Input	24V / DC
Control	DALI, DIM, DMX
Light Color	2200, 2700, 3000K, 5000K, 6500K
Body Color	Optional RAL colors
Surge protection (common/differential)	4KV/6KV
CRI	>90
Warranty	7-10 Years
Protection	IP67-IP68

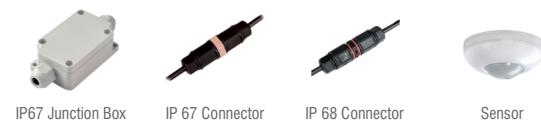
Light Colors



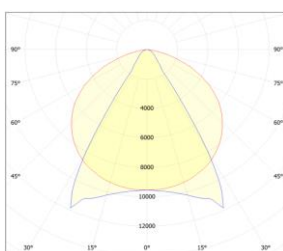
Body Colors Options



Optional Accessories



Beam Angle Options



Ordering Details

Product Code	Power	Light Color	Dimensions	Lumen
VentiRef.50.600.AC.N.4.ASYM.9005	50W	4000K	600	6750
VentiRef.75.600.AC.N.4.ASYM.9005	75W	4000K	600	10125
VentiRef.75.750.AC.N.4.ASYM.9005	75W	4000K	750	10125
VentiRef.100.750.AC.N.4.ASYM.9005	100W	4000K	750	13500
VentiRef.125.1150.AC.N.4.ASYM.9005	125W	4000K	1150	16875
VentiRef.150.1150.AC.N.4.ASYM.9005	150W	4000K	1150	20250
VentiRef.150.1500.AC.N.4.ASYM.9005	150W	4000K	1500	20250
VentiRef.175.1500.AC.N.4.ASYM.9005	175W	4000K	1500	23625
VentiRef.200.1500.AC.N.4.ASYM.9005	200W	4000K	1500	27000
VentiRef.220.1500.AC.N.4.ASYM.9005	220W	4000K	1500	29700
VentiRef.240.1500.AC.N.4.ASYM.9005	240W	4000K	1500	32400

* For different options, please contact our team.

Product Coding

Product Name	Product Power	Input	Control System	Color Temperature	Light Beam	Body Color
XX	XX	AC DC	5VGR 1-10V PUSH TRAC	DALI	3K 4K 6.5K	XX
XX	XX	AC DC	N V P T	D	3 4 6	XX