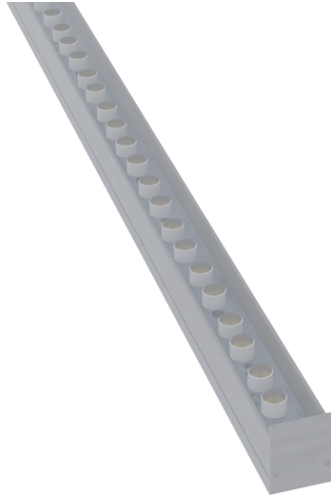




SATIN LINE SQ RGB- RGBW With optic lens

LED BAR

Surface mounted



Aluminum extruded body
UV protected High homogenous light diffusion
with high-quality diffuser
Optic lens
Aluminum mounting brackets
Production in different lengths
Daisy-chain connection topology
up to 10 meters
ENEC Standarts





SATIN LINE SQ RGB- RGBW With optic lens

LED BAR

Surface mounted



Basic Options

| | |
|-----------------------|--------------------------|
| Light source color | RGB-RGBW |
| Control interface | Dynamic White- RGB- RGBW |
| Protection class IEC | Class II |
| CE Mark | Yes |
| ENEC Standards | Yes |
| Warranty Period | 5 years |
| Input Voltage | 24V/ DC |
| LM80 | >54 000 Hours |
| MacAdams | 3 step MacAdams |
| Wind Catching Area | 0.13 m ² |
| Power Factor (Min) | 0.95 |
| Ambient temperature | -25 °C to +60 °C |
| Color Rendering Index | CRI>80 |

CUSTOMIZED OPTIONS

| | |
|-----------------------|---|
| LED Color | 3000K-4000K-6500K |
| Connectors | IP 68 Conectors |
| Light source | Mid Power LED on Alum PCB |
| Diffuser | Opaque Diffuser |
| Control System | On/Off |
| Light Distribution 1 | 12°/20°/34°/45°/60°/Asm/ Wallwasher Optics |
| Color Rendering Index | CRI>90 |

ELECTRICAL OPTIONS

| | |
|-----------------|---------|
| Input Voltage | 24V/ DC |
| Input Frequency | DC |

BODY OPTIONS

| | |
|-------------------|---------------------|
| Housing | Extruded Extrusion |
| Gasket | Silicone |
| Protection rating | IP 67 |
| Impact resistance | IK09 |
| Diffusor | Clear transparent |
| Screws | 316 stainless steel |
| End Caps | Aluminium Extrusion |
| Weight | 316 stainless steel |



CONNECTION

| | |
|------------------|---|
| Connection Cable | Silicon Cable 30cm- 3x1.5 mm ² |
|------------------|---|

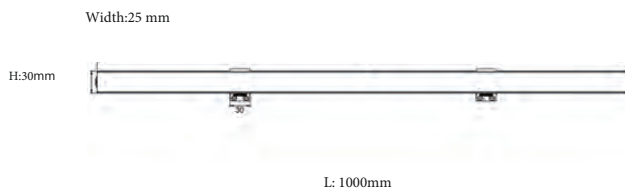
ORDERING DETAILS

| PRODUCT CODE | W | Lenght | Temp |
|--------------------------|-----|--------|----------|
| SATINLINESQ.OL.5.1000.4 | 5W | 1000mm | RGB/RGBW |
| SATINLINESQ.OL.8.1000.4 | 8W | 1000mm | RGB/RGBW |
| SATINLINESQ.OL.12.1000.4 | 12W | 1000mm | RGB/RGBW |
| SATINLINESQ.OL.14.1000.4 | 14W | 1000mm | RGB/RGBW |
| SATINLINESQ.OL.16.1000.4 | 16W | 1000mm | RGB/RGBW |
| SATINLINESQ.OL.18.1000.4 | 18W | 1000mm | RGB/RGBW |

PRODUCT CODING

| Product Name | Product Power | Product Size | Control System | | | | | Color Temperature | | | Light Beam |
|--------------|---------------|--------------|----------------|-------|------|------|-----|-------------------|----|------|------------|
| XX | XX | XX | on/off | 1-10V | PUSH | TRIM | DAU | 4K | 3K | 6.5K | △ |
| XX | XX | XX | N | V | P | T | D | 3 | 4 | 6 | XX |

Technical Drawing



Connection Diagram

