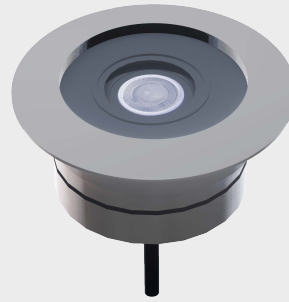


AXIS M

SLIM UNDERWATER

In Ground



AXIS m slim underwater is our smallest 1 LED inground which fulfillstwo important requirements: Small dimensions and powerful light effect.

With a small diameter of 50mm, dimension, Axis recessed inground allows to create powerful and pure light effect. It can be used as a single point of light, thanks to its dimensions. Suitable for installation on roof for outdoor areas, in the drive-over use. Installation in concrete with a recessed box.

Luminaire comes with 2 sides cable as standard.

Key Advantages

- Can be easily integrated to many designs
- Economic and efficient
- Easy installation
- High performance LED
- High corrosion resistance

Characteristics

Stainless Steel body

High efficiency LED lighting

High quality silicone gasket

3 Step MacAdams

IP68, IK09

Applications



Landscape



Outdoor

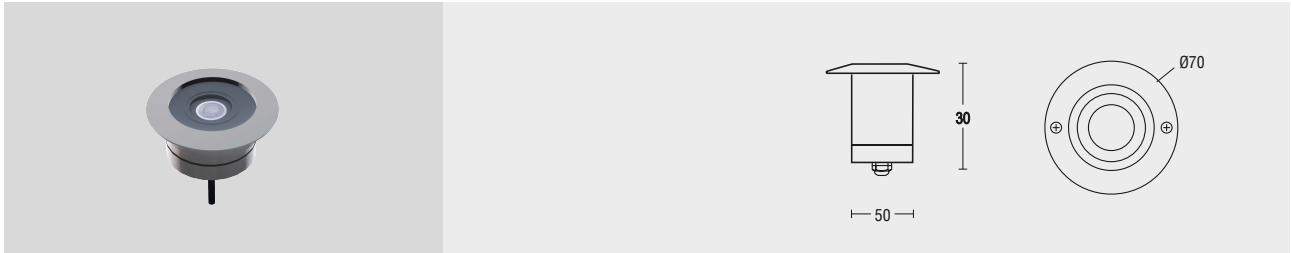


Urban



Architectural

AXIS M SLIM UNDERWATER



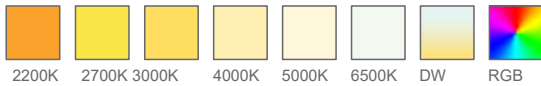
Standard Product

Input	DRIVER IS NOT BUILT IN, REMOTE DRIVER 220V DC
Control	On / Off
Optic	30°
Light Color	4000K
Body Color	7016 Grey
Frame	Stainless Steel
CRI	>82
Protection	IP67
Impact Resistance	IK10
Protection class IEC	Class I
Power factor (min.)	0,092
Weight	- kg
Ambient Temperature	-30°C / +60°C

Available Options

Input	24V / DC
Control	RGB, DALI, DIM, DMX
Optic	8°, 15°, 30°, 50°, 60°, 70°, 90°, 120°, Asymmetrical
Light Color	2200K, 2700K, 3000K, 5000K, 6500K
Body Color	Optional RAL colors
Glass	Frosted Diffuser Glass
CRI	>90
Protection	IP68
Warranty	7-10 Years

Light Colors

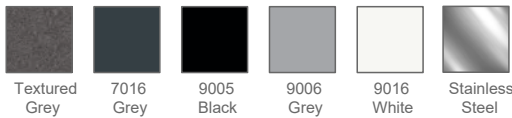


Ordering Details

Product Code	Power	Light Color	Beam Angle	Lumen
AXIS.M.SLIM.U.1.AC.N.4.30.7016	1W	4000K	30°	130
AXIS.M.SLIM.U.2.AC.N.4.30.7016	2W	4000K	30°	260
AXIS.M.SLIM.U.3.AC.N.4.30.7016	3W	4000K	30°	390
AXIS.M.SLIM.U.4.AC.N.4.30.7016	4W	4000K	30°	520

* For different options, please

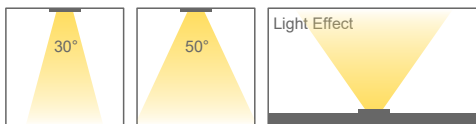
Body Colors Options



contact our team. Recessed Box



Beam Angle Options



Optional Accessories



Product Coding

Product Name	Product Power	Input	Control System	Color Temperature	Light Beam	Body Color
XX XX	AC DC	DRIVER	1-10V PUSH TRIAC DALI	3K 4K 6.5K	XX	XX
XX XXAC DCN V P T D 3 4 6 XX XX						